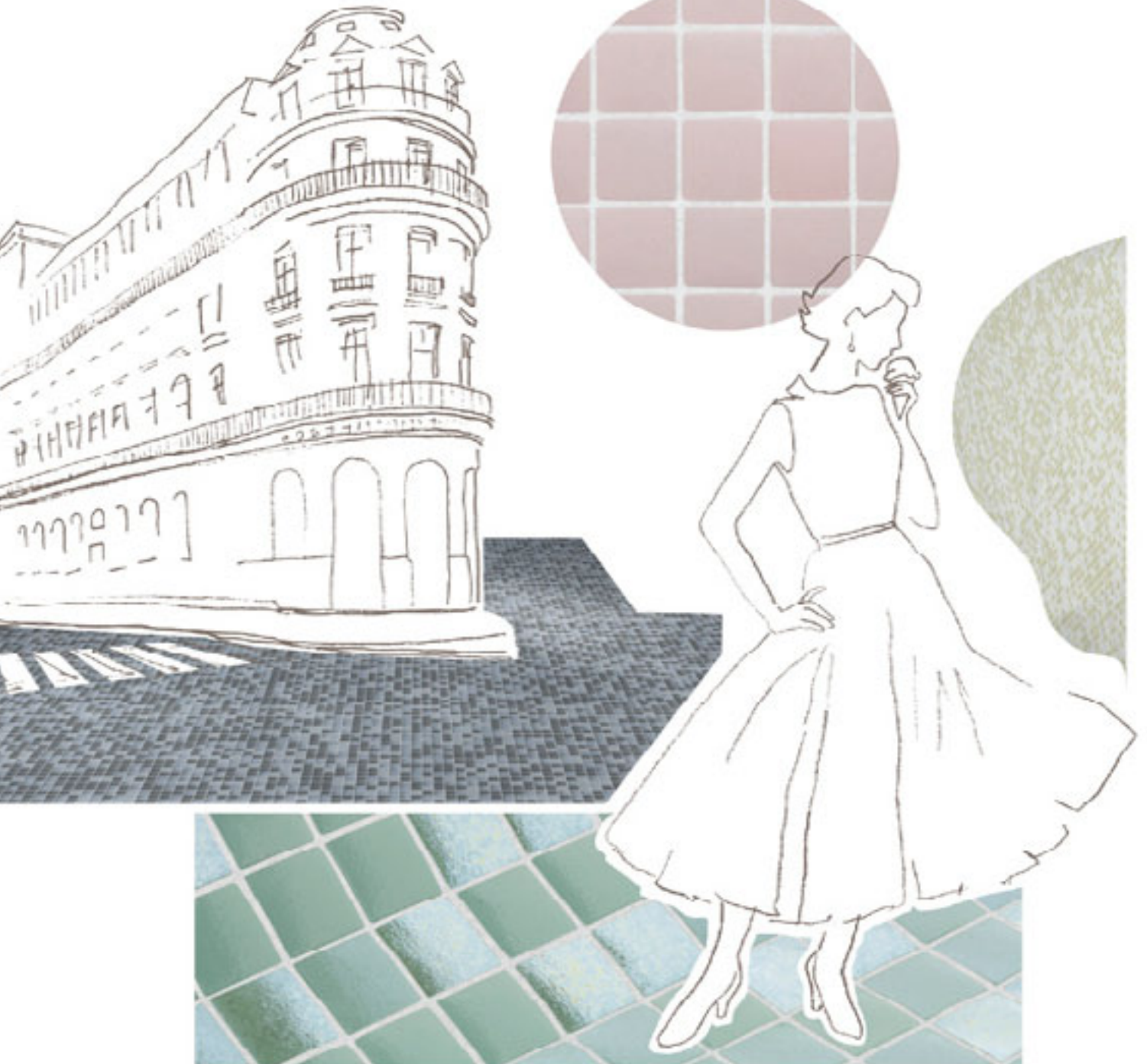


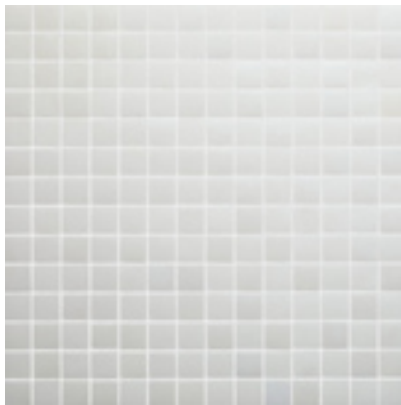
GLACÉE



¿Te apetece un helado? Queremos evocar esas tardes de verano, con los matices que aporta la luz de sus atardeceres y que culminan con un helado que no queremos que se acabe nunca. ¿Con qué sabor te quedas? Fraise, Coco, Vainille, Menthe, Violette, Sesame... Descubre nuestra propuesta más fresca y alegre. Colores suaves, una gama cromática dulce y armónica, salpicada con reflejos refrescantes que aportan luz y movimiento.

Care for an ice cream? We want to recall those long summer afternoons, the changing light of lingering evenings and an ice cream treat we wish would last forever. What's your flavour? Fraise, Coco, Vainille, Menthe, Violette, Sesame... Discover our freshest and most cheerful proposals yet. Soft colours, a sweet and gentle chromatic range, dappled with refreshing touches of light and movement.





COCO



SESAME



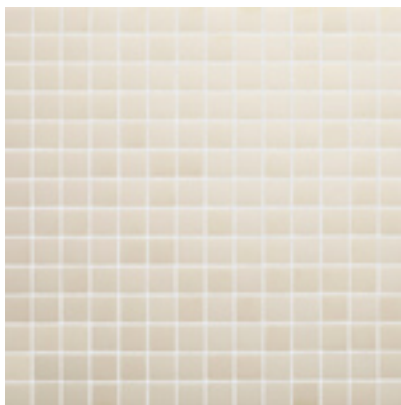
MENTHE



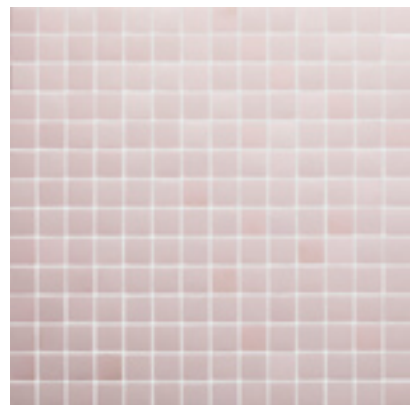
Ver fotos de proyectos



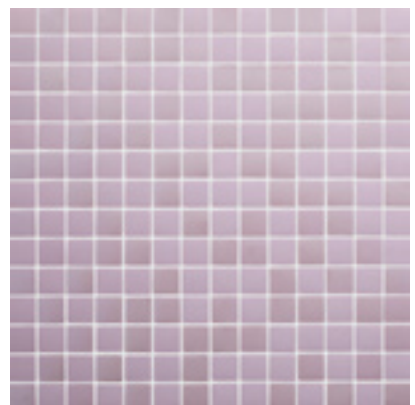
See project photos



VANILLE



FRAISE



VIOLETTE



COCO



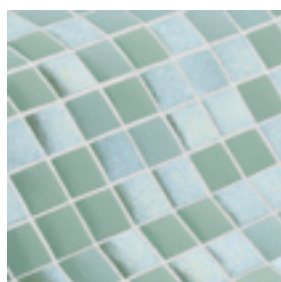
VANILLE





SESAME





MENTHE



VIOLETTE





FRAISE

